

ECOSTEEL BUILDING SYSTEMS

3030 HOME



PRE-ENGINEERED STEEL BUILDINGS

FAST. DURABLE. EFFICIENT

3030 HOME - A MODERN LIFESTYLE



PRICE

\$189,900.00

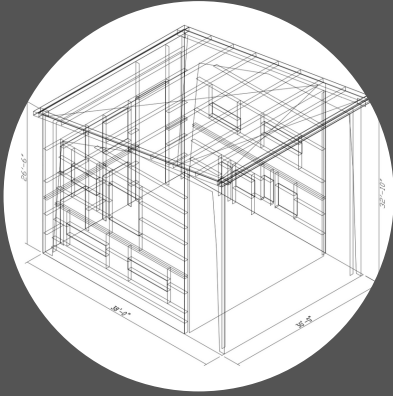


A LITTLE BIT ABOUT THE 3030 HOME

- **3 BED / 3 BATH**
- **1,800 SF LIVING SPACE**
- **200 SF OUTDOOR SPACE**
- **PRE-ENGINEERED COMPONENTS**
- **NET ZERO READY**
- **NON-COMBUSTIBLE FINISH**
- **TERMITE & MOLD RESISTANT**

The 3030 home was meant to create an open floor plan and maximize interior space of the 30' by 30' site footprint. Value engineering was made possible by choosing to leave certain building components exposed, and made visually appealing by combining different materials, textures, and colors. An achievement of prefabrication and modern and efficient building methods, the 3030 home is also extremely thermally efficient due to pre-insulated steel R32 roof and R20 wall panels.

WHAT'S INCLUDED



ENGINEERING



STEEL STRUCTURE



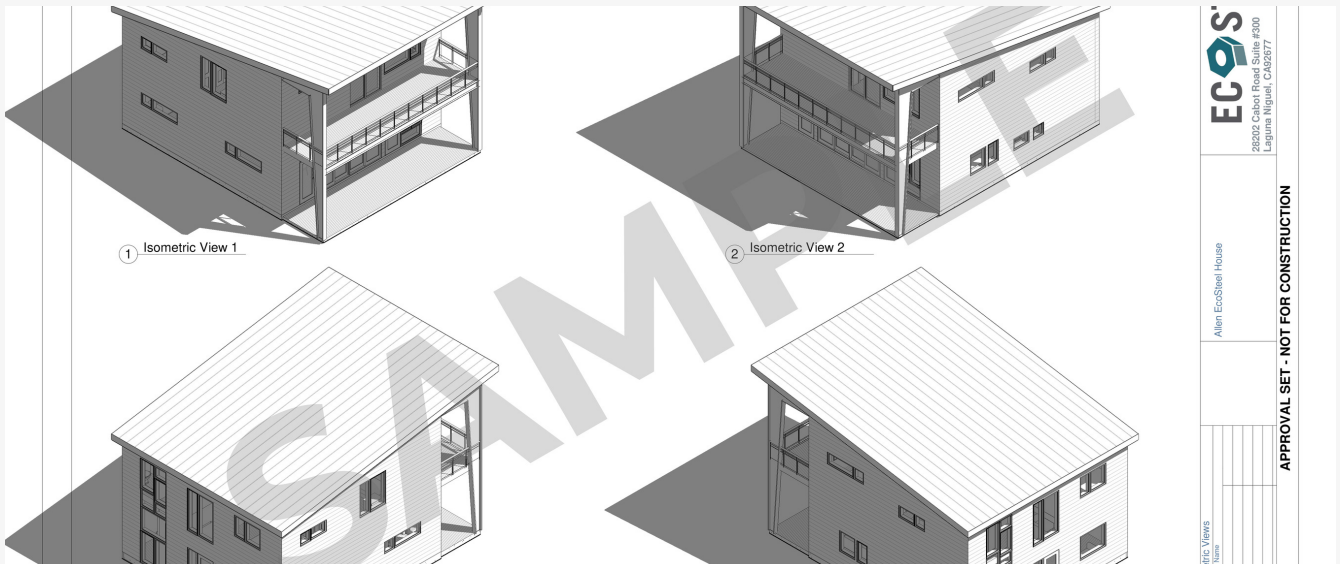
INSULATED SHELL

PLANS AND DOCUMENTS

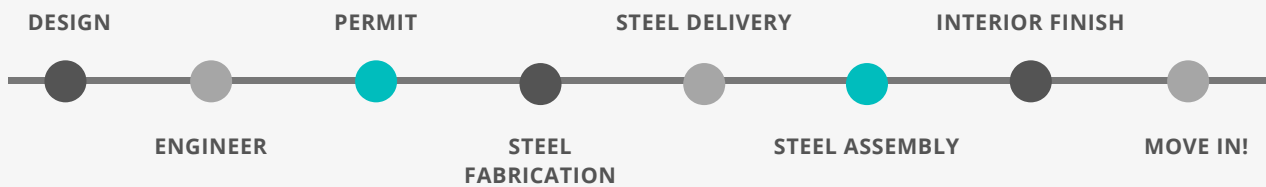
- Schematic Concept Design / 3D Model
- Detailed component diagrams with Typical Sections & Details
- 3D Model for structural framing members & panels
- Stamped Structural Engineering
- Elevations, Floor Plans, Typical Detail Sheets, Panel Layout, Framing Plan
- Insulated Panel Layout & Trim Detail Plans
- Cross Sections, Wall Sections, Typical Structure & Panel Details

MATERIAL

- Schematic Concept Design / 3D Model
 - All steel structure with bolted connections
 - Hot Rolled I-Beam Structure/ C-Channel Secondary Frames
 - 4" steel insulated roof panels (R-32)
 - 2.5" steel insulated wall panels (R-20)
 - 2nd level floor joists & framing
 - Typical bolts, screws, fasteners, sealant, and miscellaneous materials
 - Freight to building site
-



PROJECT TIMELINE



PHASES

TARGET DATES

PHASE 1 - \$18,990.00

- APPROVAL ENGINEERING PER LOCAL CODE
- COLOR SELECTION W/ 3D RENDERINGS
- COORDINATION W/ YOUR ARCHITECT / GC

2 - 3 WEEKS

PHASE 2 - \$18,990.00

- FINAL ENGINEER APPROVAL
- FINAL COLOR APPROVAL
- WET STAMPED PERMIT ENGINEERING COMPLETED

1 WEEK

PHASE 3 - \$75,960.00

- PERMIT RECEIVED
- CONSTRUCTION DRAWINGS PRODUCED
- MATERIAL FABRICATION BEGINS

3 - 4 WEEKS

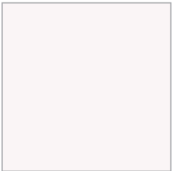
PHASE 4 - \$75,960.00

- STRUCTURAL STEEL DELIVERY
- INSULATED WALL PANEL DELIVERY
- INSULATED ROOF PANEL DELIVERY

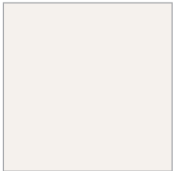
2 - 3 WEEKS

STANDARD COLOR OPTIONS

EXTERIOR COLORS



REGAL WHITE



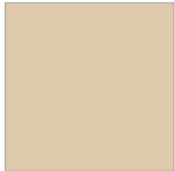
IMPERIAL
WHITE



WARM WHITE



SANDSTONE



SURREY BEIGE



PEARL GRAY



SLATE GRAY



WEATHERED
COPPER



COLONIAL RED



NATURAL
GREEN



EVERGREEN

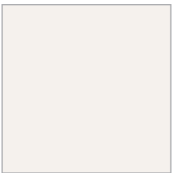


SLATE BLUE



ROYAL BLUE

INTERIOR COLORS



IMPERIAL
WHITE

The colors shown here are representative only and not necessarily true reproductions of actual coating colors. Coil coat color chips are available upon request. For further information regarding color availability, please contact your local sales representative.



WHAT'S NOT INCLUDED

After the shell is completed, you select interiors to fit your vision, taste, and lifestyle. The following plans, documents, materials and services are some of the items you will need to budget for. These items are not designed or specified by EcoSteel. However, we will consult with your engineers and sub-contractors to educate them on our building system designs, provide them with any necessary data or specifications specific to our designs, and provide general assistance in helping them to complete their work.

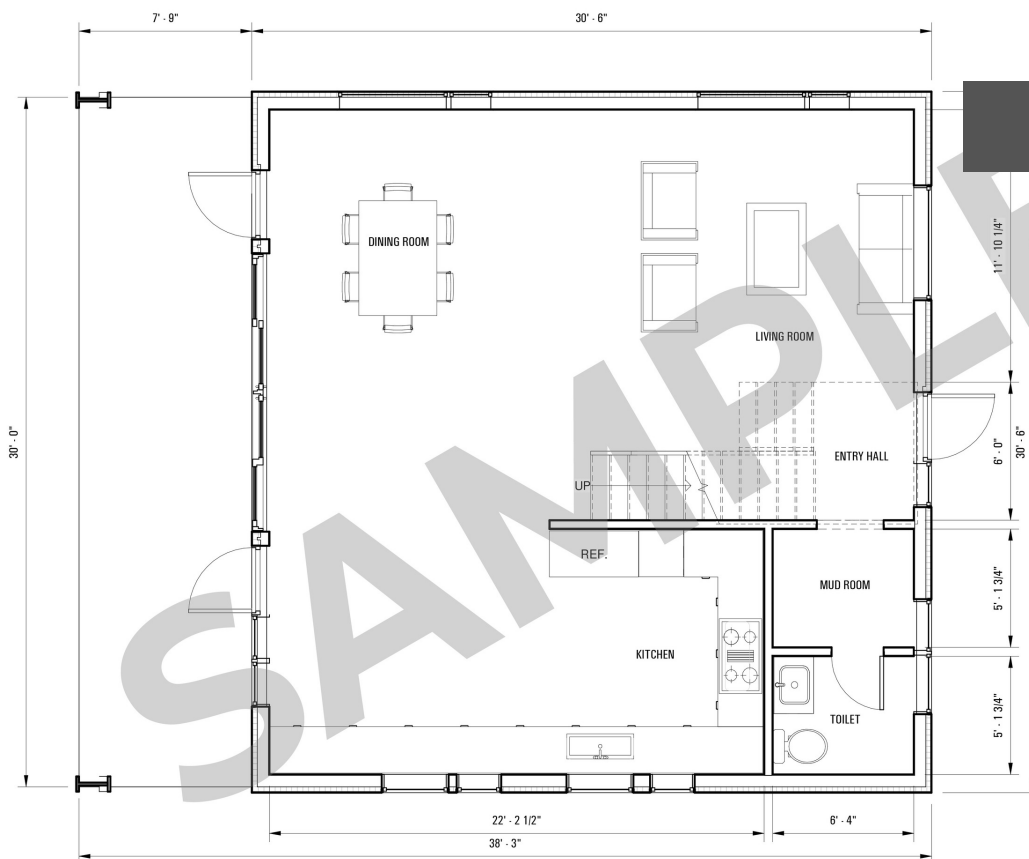
PLANS AND DOCUMENTS BY OTHERS

- Soils tests
- Water and septic engineering and plans, including building and health permits, and impact fees
- Site plans, including drainage plans, landscape plans, land surveys and legal descriptions, and building placement
- Zoning plans and compliance, including easements, utilities and setbacks
- Stamped electrical and mechanical plans and specifications (if required by local code), and energy calculations
- Railings for decks and stairs
- Finished flooring and decking materials
- Kitchen and bathroom cabinet and fixture elevations, plans and specifications

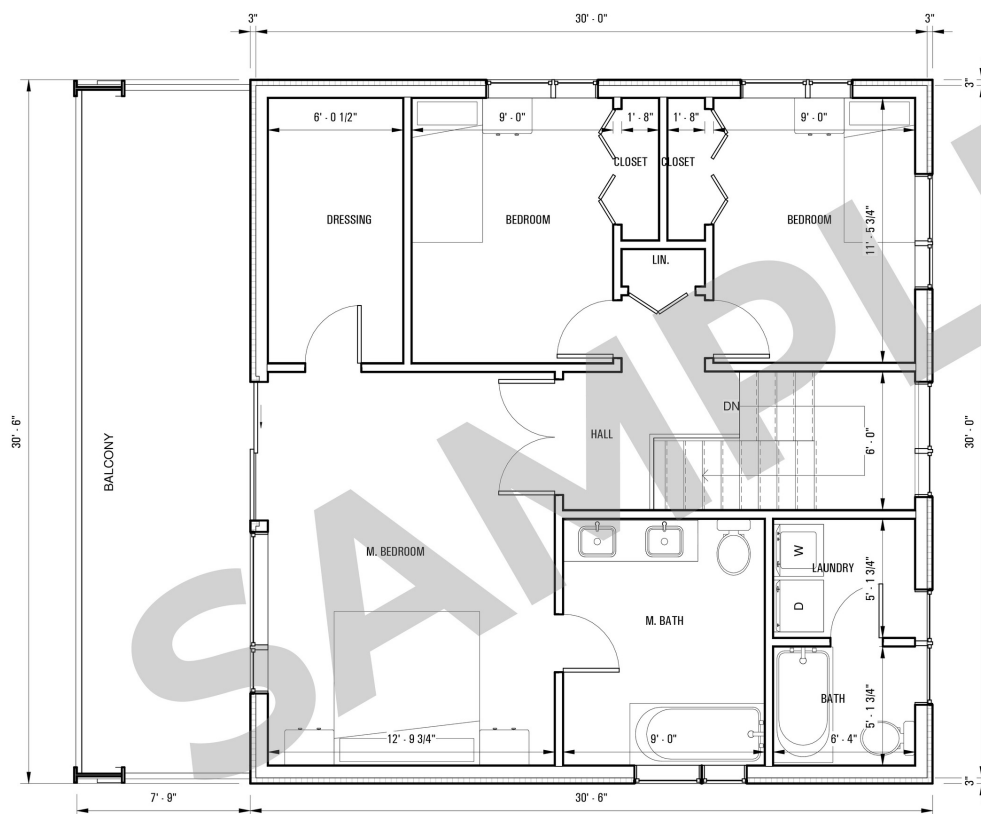
CONSTRUCTION MATERIALS, LABOR, & SERVICES BY OTHERS

- Site grading, drainage, and landscaping
 - Foundation forming, construction, and anchor bolt placement
 - Concrete and masonry work, interior and exterior
 - Steel and insulated panel erection labor
 - Plywood floor decking (if applicable)
 - Interior wall and ceiling drywall, finish and painting
 - Interior wall framing
 - Exterior/Interior doors and windows
 - Floor coverings
 - Kitchen and bathroom appliances, fixtures, cabinets and counters
 - Mechanical heating, venting and air conditioning (HVAC) systems
 - Electrical wiring and fixtures Plumbing
 - Construction Administration and Job Visits
-

FLOOR PLANS

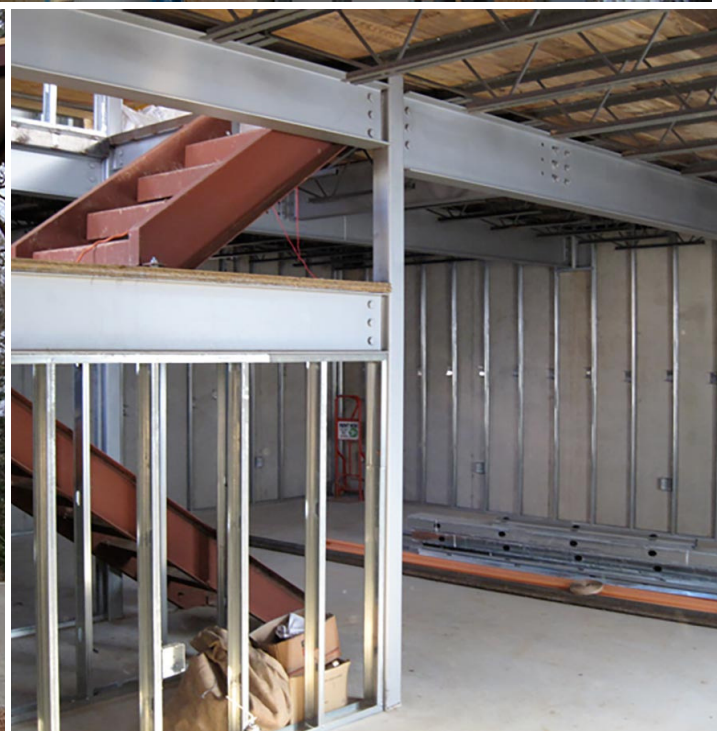


① Level 1 - Floor
 1/4" = 1'-0"



① Level 2 - Floor
 1/4" = 1'-0"







FINISHED PHOTOS





EC  **STEEL**

1.800.587.6604

INFO@ECOSTEEL.COM

28202 CABOT RD SUITE 300

LAGUNA NIGUEL, CA 92677