

# Modular MicroHouse

## Low Cost and Durable

Measured Works Architecture is partnering with EcoSteel to develop the Modular MicroHouse: a low-cost, durable and flexible solution for utility housing applications, such as agriculture, service, resort and tourism.

EcoSteel's versatile building system provides a cost-effective, durable structure that is energy efficient and low-maintenance; and Measured Works has designed a flexible modular system, allowing for a variety of unit configurations and sizes based on client needs.

Each MicroHouse has a kitchen and bath core and opens to a covered deck at the ends. The interiors are prefinished and ready for use, or can be easily customized per client preferences. MicroHouse units are intended to be clustered to maximize efficiency and minimize consumption of resources.

## Sustainable and Efficient

The Modular MicroHouse is designed to use space and resources efficiently, while employing technology and natural systems to create bright, comfortable and attractive places to inhabit.

All MicroHouse units have continuous operable clerestory windows for abundant natural light, cross-ventilation and passive cooling. EcoSteel's prefabricated insulated panels, coupled with high performance glazing, create a thermally efficient building envelope.

Wide roof overhangs shade windows and doors and provide cover for exterior decks, and a vegetated trellis opposite sliding glass doors provides additional shading and privacy. The gently sloping shed roof harvests rainwater and supports solar photovoltaic panels.



# Modular MicroHouse

## Architectural and Vernacular References



### Project Credits

(Top: L-R):  
Walker Guest House, Paul Rudolph  
Marie Short House, Glenn Murcutt  
Beach Huts, Thailand

(Bottom: L-R)  
Beach Hut, Mauritius  
Fletcher-Page House, Glenn Murcutt  
Delta Shelter, Tom Kundig

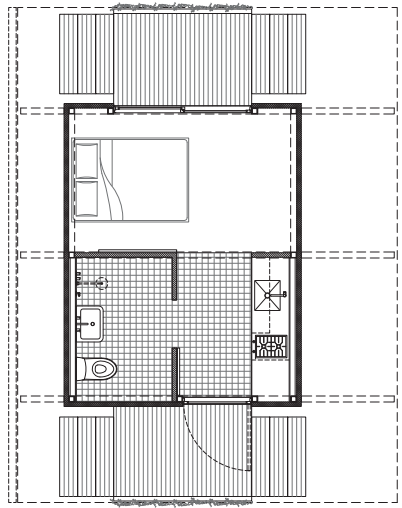
## Conventional Low-Cost Housing Options



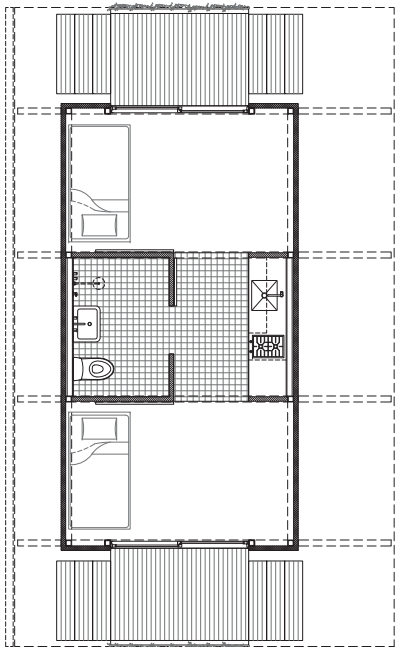
# Modular MicroHouse

Modular System - Flexible Space

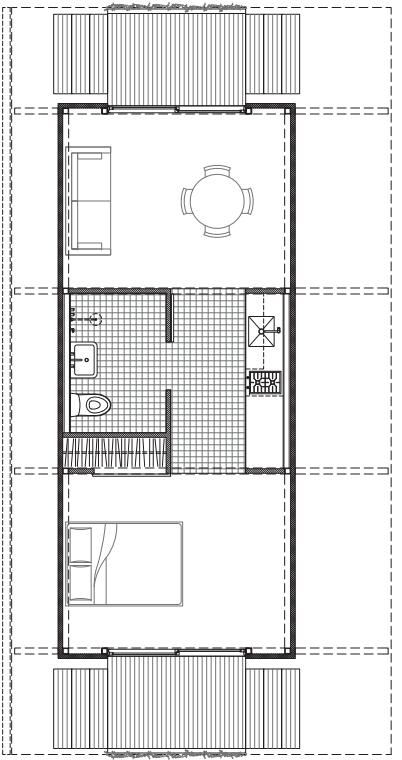
Model 2x8-148S



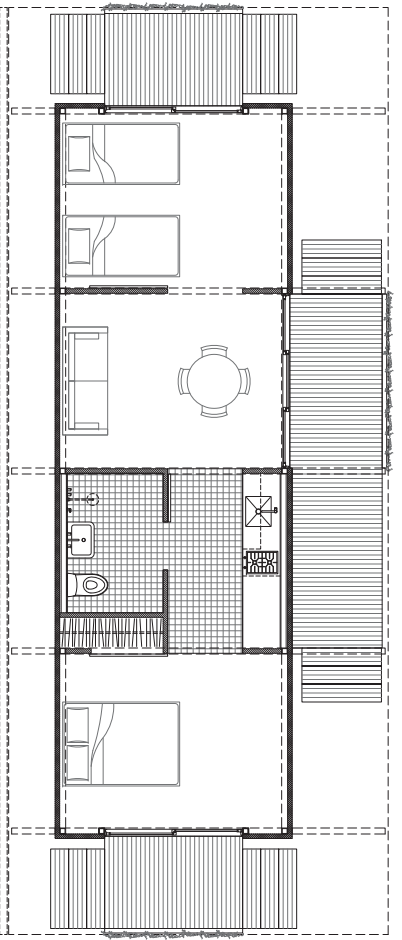
Model 3x8-148D



Model 3x10-148A



Model 4x10-148A

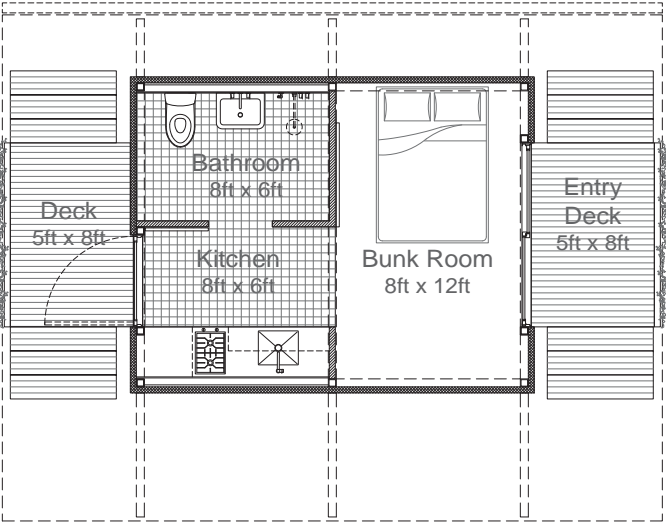


Naming Legend:

	# column bays	x	span between columns (in)		
	3	x	8	148	D
			width of bays (ft)	configuration:	
				D = dorm	
				S = studio	
				A = apartment	

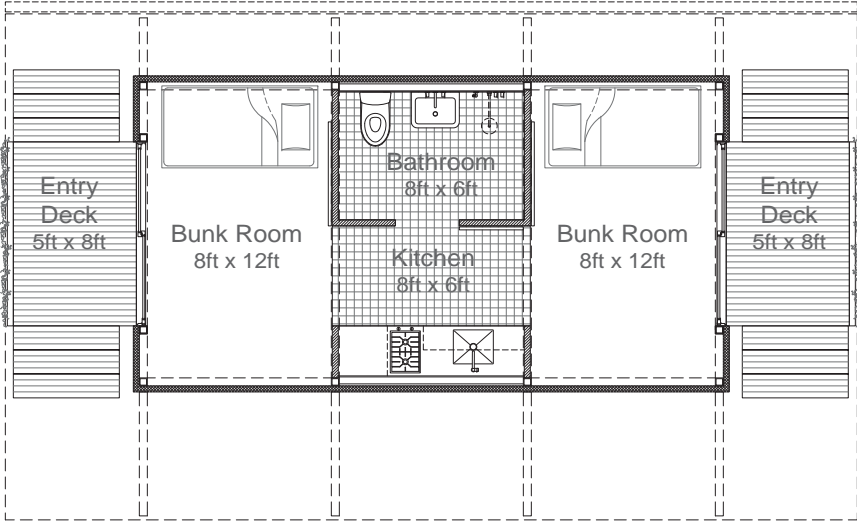
# Modular MicroHouse

Model 2x8 148S 220 square feet



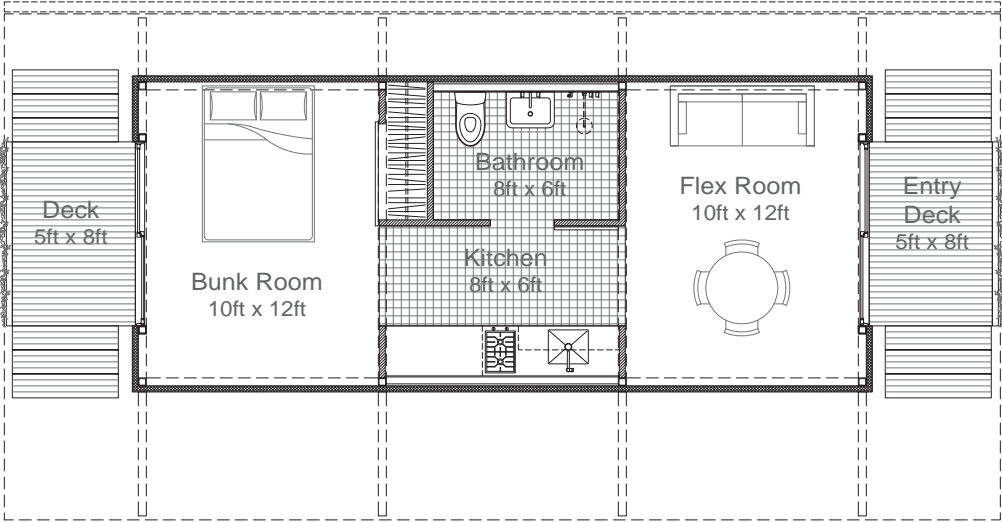
# Modular MicroHouse

Model 3x8-148D 325 square feet



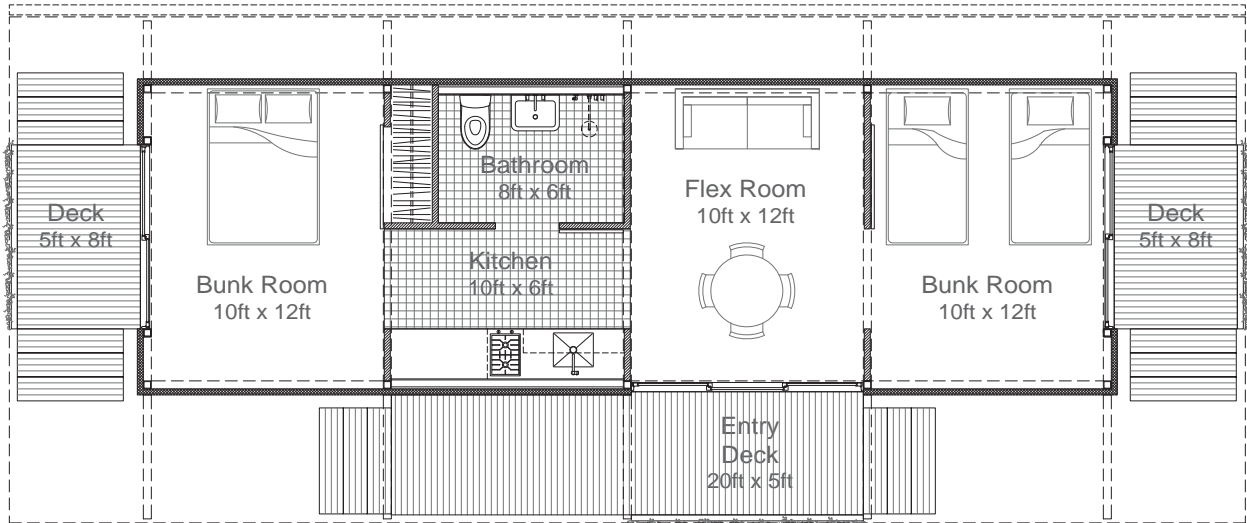
# Modular MicroHouse

Model 3x10-148A 405 square feet



# Modular MicroHouse

Model 4x10-148A 535 square feet



# Modular MicroHouse

---

## Measured Works Architecture

Carl Mahaney, AIA  
445 W 19th St Suite 7E New York NY 10011

(212) 228-8153  
[www.measuredworks.com](http://www.measuredworks.com)



EcoSteel Building Systems  
3100 Pinebrook Road  
Park City, Utah 84098

(800) 587-6604  
[www.ecosteel.com](http://www.ecosteel.com)